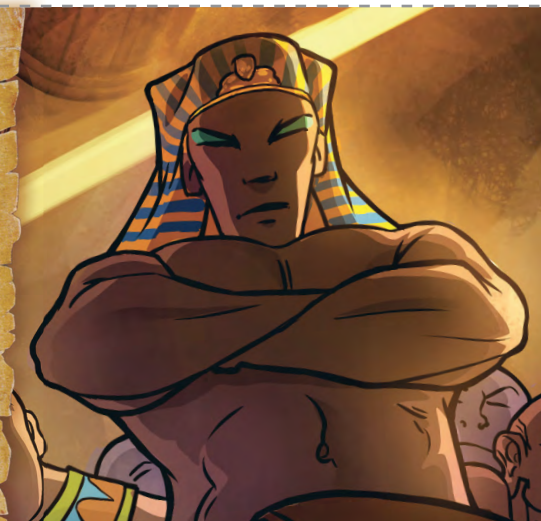


Pharaoh (1513 B.C.E.)

PHARAOH (1513 B.C.E.)

BIBLE CARD

33



QUESTIONS

- A.** Pharaoh asked: “Who is _____, that I should obey his voice?”—Exodus 5:1, 2.
- B.** True or false? Pharaoh was a humble man.—Exodus 9:13, 17.
- C.** At the Red Sea, what stood between Pharaoh’s army and the camp of Israel?—Exodus 14:19, 20.

About 98 C.E.

1 C.E.

Died in 1513 B.C.E.

4026 B.C.E.

Adam created



Chased after the Israelites and died in the Red Sea

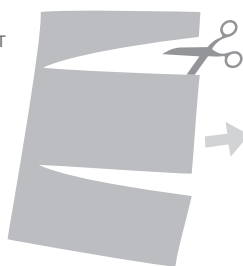
P H A R A O H

PROFILE Pharaoh refused to listen when Jehovah told him to send the Israelites away. After Jehovah struck Egypt with ten plagues, Pharaoh finally let the Israelites leave. Later, the Egyptians chased after them. But Jehovah saved the Israelites by drowning Pharaoh and his army in the Red Sea.—Psalm 136:15.

ANSWERS

- A.** Jehovah.
- B.** False. Pharaoh was “behaving arrogantly.”
- C.** The pillar of cloud.

PRINT



CUT OUT



FOLD IN HALF



AND SAVE

