

WI LUBELE

TITO PI KER PA JEHOVAH



**Tika Baibul Pud
Konyo i Kare-ni?**

LOK MA TYE IYE



Vol. 139, No. 1 2018 ACHOLI

Wel magajin ma kigoyo: 69,804,000
I LEB 327

MAGAJIN MAN, *Wi Lubele*, keto deyo i kom Lubanga Jehovah, Laloc Mamalo ma loyo polo ki lobo. Kweyo cwiny dano ki lok me kwena maber me Ker pa Lubanga, ma en aye gamente ma tye ada i polo, ma coccok ki bikelo agikki me jami maraco ducu ci loko lobo doko paradice. Dongo niye i kom Yecu Kricito, ma oto wek wanong kwo ma pe tum dok ma kombedi dong tye ka loco Kabaka me Ker pa Lubanga. Magajin man kicako goyone i mwaka 1879 labongo keng dok pe cwako tim me wibe. Jenge i kom Baibul macalo guti me twerone.

The Watchtower (ISSN 0043-1087) Issue 1 January/February 2018 is published by Watchtower Bible and Tract Society of New York, Inc.; L. Weaver, Jr., President; G. F. Simonis, Secretary-Treasurer; 1000 Red Mills Road, Walkkill, NY 12589-3299, and printed by Watch Tower Bible and Tract Society of South Africa NPC, 1 Robert Broom Drive East, Rangeview, Krugersdorp, 1739. © 2017 Watch Tower Bible and Tract Society of Pennsylvania. Printed in South Africa.

For SOUTH AFRICA:
Jehovah's Witnesses
Private Bag X2067
Krugersdorp
1740

UGANDA:
Jehovah's Witnesses
P.O. Box 4019
Kampala

Pi adrec ducu ma kireyogi
nen www.jw.org/en/contact.

- 3 Tika Tira me Baibul Pud Konyowa i Kare-ni?
- 4 Pwony me Baibul —Konyowa Kare Ducu
- 6 Tika Karene Dong Okato Woko Kece Tito Jami ma Onongo Pe Gingeyo Con? (Bok)
- 8 Pwonyi ki Kit me Gwokke ki i Peko
- 10 Pwonyi ki Kit me Cobo Peko
- 12 Pwonyi ki Kit me Ciro Peko
- 14 Baibul ki Anyimmi
- 16 In Itamo Ningo?

TIKA BAIBUL PUD KONYO I KARE-NI?

Ki ngec mapol ma onya i lobo man ma opong ki tet manyen i kare-ni, tika Baibul otii tutwal ma konye dong pe? Baibul waco ni:

“Ginacoya ducu ma yam gicoyo, gicoyo pi teko pa cwiny pa Lubanga. Konyo me pwony.”—2 Temceo 3:16.

Magajin man me *Wi Lubele* nyamo lok ma Baibul waco ni ngec ma tye i iye twero konyowa i kwowa me nino ducu.



Imito nongo ngec mukene
nyo kwano Baibul ki paco
labongo cul mo?

Cit i www.jw.org

nyo peny pi gin ma imito kun itiyi
ki adrecwa ma tye piny kany.

Magajin man pe kicato. Kicoyo me pwonyo dano ki Baibul i wi lobo ducu dok yub man jenge i kom mot ma dano miyo kun a ki i cwinyi. Ka imito miyo mot, cit i kabadowa me www.jw.org/ach. Ka pe dok kinyuto mapatte, Ginacoya ducu kikwanyo ki i Baibul me leb Acholi me mwaka 1985 pa Bible Society of Uganda, kun kitiyo ki nukuta me kare-ni. Ka ma kiketo iye *NW* i nge tyeng mo, nongo nyuto ni kigonyo oa ki i leb Muno me *New World Translation of the Holy Scriptures*.

Tika Tira me Baibul Pud Konyowa i Kare-ni?



JO MOGO GIWACCI PE KONYOWA. Doktor mo acel owacchi tic ki Baibul i kare-ni bedo calo tic ki buk me cayan ma kicoyo i mwaka 1920 ki wiye me pwoyo litino kwan i kare-ni. Jo ma pe giye i kom Baibul gitwero penyi ka iye tic ki buk ma nyuto kit me tic ki kompiuta macon me tic kwede i kom kompiuta manyen. Jo mukene gineno Baibul calo obedo buk ma otii ma dong pe twero konyogi.

Pingo ngat moni twero tic ki buk macon-ni i kare man me tet manyen-ni? Tye kabedo mapol me intanet ma gicwalo woko tam ki pwoyo manyen kare ki kare. Telebijon mapol ginyuto jami me pwoyo ma a ki bot jo maryek, jo ma miyo tam i kom kwo ki dok gilwongo luco buke mapol. Lucat buke gicato buke mapol ma miyo tam ki dano, man oweko gitye ka tiyo cente bilion dolla mapol adada.

Ki lwak lok angeya manyen ma kati kare ki kare i kare-ni, tika pud dok mitte ni wakwan Baibul—buk ma kicoyo mwaki 2,000 angec? Tika nongo pe tye lok ada ka jo ma pe giye i kom Baibul giwacchi tic ki Baibul tye calo tic ki buk me cayan nyo buk ma nyuto kit me tic ki kompiuta ma karene dong okato woko? Ki lok ada, tam ma kit meno pe tye atir. **Tet ki ngec me cayan lokke kare ki kare, ento tika jami ma mitte me kwo pa dano lokke?** Dano gimito ngeyo pingo gitye kwo, gimito nongo yomcwiny, bedo labongo lworo, ki dong bedo ki wat maber ki jo me otgi kacel ki luremgi.

Kadi bed ni Baibul otii, pud miyo tam ki pwoyo i kom jami magi ki mapol. Baibul bene nyuto ni Lacwecwa kikome aye ma oweko kicoyo lok ma iye. Nyuto ni watwero nongo tira ma gudo yo me kwowa ducu ki dok konyowa me lweny ki peko mapatpat i kwowa. (2 Temceo 3:16, 17) Dok bene nyuto ni twero miniwa tam i kare ma mitte kikome—tamme pe lokke! Baibul bene wacchi: “Lok pa Lubanga obedo gin makwo.”—Jo Ibru 4:12.

Lok magi ma Baibul waco-ni tika tye ada? Tika karene dong okato woko kece pud tam ma iye tiyo dok konyowa i kare-ni—ma oweko tye buk makwo? Man obedo *Wi Lubele* mukwongo i kin mukene ma kitgi dok pat ma kiyubo me konyi nongo lagam i kom lapeny magi.



Pwony me Baibul —Konyowa Kare Ducu

GO KONG MAN: Icito i limo piny ka ma kigwoko iye jami mogo me kare macon. Pol jami magi dong gynec, gutyer dok guballe woko. Mukene i kingi butgi mogo dong pe. Ento acel i kingi pud tye maber, tye kit ma kiyubo kwede con dok gin mo keken ki i kome pe oballe. Ipenyo ngat ma tye ka nyutti jami magi ni: “Man aye gin manyen loyo?” Ci en ogamo ni: “Ku, meno aye gin ma dong otii loyo, dok pe kiroco ka mo keken.” Ento dok ipenye ni: “Onongo kigwoko ka mo maber?” En ogamo ni: “Ku, en aye dong gin ma obedo ka marac loyo, i wi kot ki yamo magwar. Jo mapol bene gutemme me balone woko.” Iromo bedo ki ur adada, kun ipenyo ni, ‘kiyubo ki gin ango?’

I yo acel-li, Baibul bene rom ki gin meno ma kite dok pat tutwalle. Obedo buk mo macon adada—dok otii loyo buke mapol. Ki lok ada, buke macon mogo

gire pud tye. Ento calo jami macon ma kigwokogini, cocgi dong guballe woko ka kare woto ki kato. Lok ma giloko me labolle, madok i kom ngec me cayan, dong pe girwatte ki ngec manyen ma dano giye iye i kare-ni. Tam ma gimiyoy ma lubbe ki yotkom dok keto kwo pa dano ka ma ding ma ka miyo kony. Dok coc macon mapol dong gudong bute keken, dulgi mukene orwenyo nyo oballe woko.

Ento Baibul dok pat adada. Kicako coyone cencwari 35 angec, ento lokke pud tye maber dok pe olokke. Dok kadi bed dano gutemme kare ki kare pi cencwari mapol—me wangone, gengone ni dano mogo pe gubed kwede ki dok nyuto cac i kome—lok ma kicoyo iye pud tye kit macon. Lok ma iye pe tii dok karene pe kato kadi bed ngec manyen obin, ma ka meno, Baibul dok tito jami mapol ma bitimme i anyim i yo me aura adada.—Nen bok ma wiye tye ni



“Tika Karene Dong Okato Woko Kece Tito Jami ma Onongo pe Gingeyo Con?”

CIK MA WAMITOGI I KARE-NI

Itwero penye ni, ‘Tika pwony me Baibul pud konyowa wa i kare-ni.’ Me gamo lapeny man, penye kekeni ni: ‘Peko mene ma dong rac loyo ma dano gitye ka denone i kare-ni? Mene ma dong kelo lwor loyo?’ Gwok iromo tam i kom lweny, balo kabedo murumowa, turo cik, nyo camucana. Kong dong wanen cik ma igi lac mogo ma Baibul pwonyo. Ka itye ka timo meno, penye kekeni ni, ‘Ka onongo dano gilubo cik magi, onongo kono lobo pe tye kabedo maber makato?’

BEDO KI KUC

“Gitye ki gum [yomcwiny] jo ma kelo kuc, pien gin aye gibilwongogi ni litino pa lubanga.” (Matayo 5:9) “Ka ce twerre ki tung botwu, myero wubed ki kuc ki dano ducu.”—Jo Roma 12:18.

TIMO KICA

“Gitye ki gum [yomcwiny] lukica, pien gin bene gitimo kica botgi.” (Matayo 5:7) “Wudi cwinywu kekenwu, ngat acel acel odi cwinye i kom lawote, kun wutimo kica ki luwotwu i kinwu kekenwu pi bal-

wu. Ka ngat mo i kinwu tye ki lok mo i kom lawote, timo kica pi bal myero obed tye macalo Rwot [Jehovah]* bene ceng otimowu kica.”—Jo Kolocai 3:13.

BEDO LABONGO APOKAPOKA ME RANGI DEL KOM

Lubanga “ocweyo rok ducu nia ki i kom dano acel wek gubed i wi lobo.” (Tic pa Lukwena 17:26) “Lubanga pe poko kin dano, ento en jolo dano ma i rok ducu ma gilworo en ki ma gitiyo gin ma tye atir.” —Tic pa Lukwena 10:34, 35.

GWOKO KABEDO MURUMOWA

“Rwot [Jehovah] Lubanga otero dano, oketo i Eden wek opur, dok ogwok bene.” (Acakki 2:15) Lubanga ‘bijwero jo ma tye ka balo lobo woko.’—Niyabo 11:18.

KWERO CWINY ME WORDO KI TIM CAROCARO

“Wugwokke i paro lim; pien kwo pa dano pe cung i wel lim mapol ma en tye kwede.” (Luka 12:15) “Tim kwele ki tim carocar ducu, ki woro me lim pe myero gilwong nyinggi i kinwu; meno aye gin ma myero bot jo pa Lubanga.”—Jo Epeco 5:3.

NGAT MA GENNE DOK MA TIYO MATEK

“Wamito ni wati gin maber i kare ducu.” (Jo Ibru 13:18) “Dano ma yam bedo ka kwalo jami pa jo mukene myero dong owek kwo obedi; myero en ocak tiyo tic maber ki cinge.”—Jo Epeco 4:28.

ADWOGI MABER MA BINO KA WAKONYO LUPEKO

“Wucuk cwiny jo ma cwinygi odoko nyap, wukony jo ma goro, wudi cwinywu bene i kom dano ducu.” (1 Jo Tecalonika 5:14) ‘Kony litino kic ki mon ma coggi oto i kom can ma gitye kwede.’—Yakobo 1:27.

Baibul pe gik ki miniwa cik meno keken. Ento pwonyowa me maro cik meno ki me ketogi i tic i kwowa me nino ducu. Ka onongo dano mapol gilubo cik meno, onongo mono kono pe okonyo me

* Jehovah aye nying Lubanga kit ma kinyuto kwede i Baibul.—Jabuli 83:18, NW.

Ƶwiko peko ma dano gitye ka denone i kare-ni? Ki loko ada, cik me Baibul konyo adada i kare-ni dok bene rwatte ki karewa-ni adada! Ento gin ango ma pwony me Baibul twero timone piri i kare-ni?

KIT MA PWONY ME BAIBUL TWERO KONYI I KARE-NI

Laco mo maryek loyo yam owaco ni: ‘ryeko nen ki i ticce.’ (Matayo 11:19) In bene pe iye i lok meno? Ryeko ma watye kwede nen i kwowa ka waketo i ticwa. Pi meno, iromo tamo ni: ‘Ka ada Baibul konyo, ci myero pe alokaloka onen i kwona? Twero konya nining me lweny ki peko ma atye ka wok iye i kare-ni?’ Nen kong labol man.

Delphine* onongo dwong ki tic me atiya, dok kwone onongo tye maber. Cutcut jamine olokke, ci en ocako kato ki i kwo matek. Nyare ma tye ki mwaka apar ki wiye oto woko. Kenygi oket woko. Can cente ocako diye. En owaco ni: “Pe onongo dong angyeo anga ma abedo kulu—nyara pe, cwaru bene oweka woko dok ota oballe woko. Onongo awinyo calo konya pe dok ape ki tyen lok mo keken me mede ki kwo.

Delphine ocako neno maber ada pa lok man, ma waco ni: “Kare me kwowa romo mwaka pyerabiro, nyo pyeraboro ka komwa yot; ento gin ducu kelo

* Kiloko nying mogo woko i pwony man kacel ki adek mukene ma lubu.

TIKA KARENE DONG OKATO WOKO KECE TITO JAMI MA ONONGO PE GINGEYO CON?

CAYAN

BAIBUL PE OBEDO BUK ME CAYAN, ENTO TITO LOK MOGO MA DANO ONONGO PUD PEYA GUNIANG IYE CON. NEN KONG LABOL MOGO MANOK.

• Tika polo ki lobo tye ki acakkine?

Lucayan i kare macon onongo gitamo ni lagam pi lapeny man tye ni pe. Ento i kare-ni dong giye ni acakki me polo ki lobo tye. Baibul otito meno ka maleng wacon. —Acakki 1:1.

• Pii kono lwore nining i lobo?

I kare macon, dano onongo pud pe giniang kit ma pii lwore kwede i lobo. Ento Baibul onongo dong otito pire con cencwari mapol ata angec. “Pii ma opong i kulu ducu mol cito i nam, ento nam pe pong; pii dok cen ka ma kulu ocakke ki iye, ka cako mol ki kunnu dwogo i nam.”—Latitlok 1:7.

• Tika jami ma i dan polo gitii?

Aristotle, lacayan mo me Grik i cencwari me angwen K.M.P., onongo pwonyo ni jami ma i lobo keken aye balle, ento jami ma i dan polo pe lokke nyo pe tii. Pwony meno onya i kin dano pi cencwari mapol. Ento i cencwari me 19, lucayan gutimo kwed matut i kom pwony meno odoco. Gunongo ni jami ducu ma i dan polo nyo i lobo gitii woko ka kare woto ki kato. Lord Kelvin, Lacayan mo acel ma omiyo kony i kwed man owaco ni Baibul loko i kom polo ki lobo ni: “Gibiti woko macalo bongo.” (Jabuli 102:25, 26) Kelvin onongo ye gin ma Baibul pwonyo, ni Lubanga twero gengo Cwecce wek pe gutii.—Latitlok 1:4.

• Cwec ma i dan polo kacel ki lobo gungabbe i kom ngo?

Aristotle onongo pwonyo ni jami ducu ma i dan polo gugurre kacel calo odilo ma kirwako i i lawote, ki dok mukene nongo tye i i meno, dok ma i dyere me agikkine aye lobo, dok dano ma i lobo nongo gitwero neno dan polo. I kine cencwari 18 K.M., lucayan gucako ye bene ni lakalatwe ki cwec ducu ma tye i dan polo pe gungabbe i kom gin mo. Ento i buk pa Yubu, ma kicoyo i cencwari me 15 K.M.P., wakwano ni Lacwecwa “pe ongabo lobo i kom gin mo.”—Yubu 26:7.

can ki ayelayela keken, pien gikato oyot,wan bene warwenyo woko.”—Jabuli 90:10.

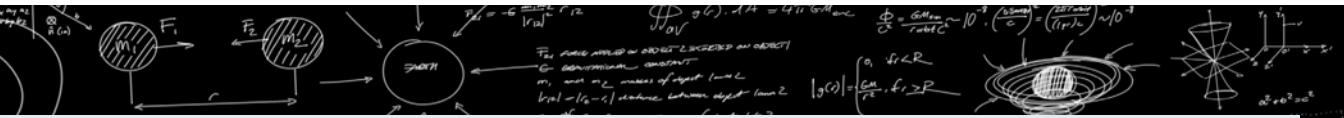
Delphine onongo kony ki i Baibul i kare man ma kwo tek tutwal-li. Baibul okonye adada. Kit ma wabineno kwede i pwoy adek ma lubu, jo mapol bene gunongo ni Baibul otimo jami me aura i kwogi macalo adwogi me keto tirane i tic. Dong guniang ni meno Baibul tye calo gin mo me kare macon ma walo iye i acakki me pwoy man. Pe rom ki buke mogo ma gitii woko ci doko gin ma konye pe-ni. Tika tye kumeno pien Baibul dok kiyubo ki gin mo mapat? Tika twero bedo ni Baibul tye ki tam pa Lubanga ento pe tam pa dano?—1 Jo Tecalonika 2:13.

Gwok in bene inongo ni kwo cek dok opong ki peko. Ka kwene ma inongo iye kwecwiny ki tam ma genne ka peko obwoyi woko?

Kong dong wanen yo adek kit ma Baibul twero konyowa kwede. Twero pwoyoni ki kit me

- 1 gwokke ki peko.
- 2 cobo peko ma twero bino.
- 3 ciro peko ma pe itwero kwanyone.

Pwoy ma lubo man binyamo jami adek magi.



GENGO TWO KI GWOKO LENGU

BAIBUL PE OBEDO BUK ME CAYAN, ENTO TYE KI CIK MOGO MA DANO GINGEYO I KARE-NI MA LUBBE KI YOTKOM.

• Poko kin jo ma gitye ki two ma kobo.

Cik pa Moses tito ni myero kipok kin jo ma gitye ki dobo wek pe guribbe ki jo mukene. Ludaktari onongo pe gitye ki ngec man nio wa i kine ka mwaka 500 K.M. me o i mwaka 1500 K.M., i kare ma two mo marac adada opoto, dok cik meno pud tiyo wa i karewa-ni.—Lulevi, cura 13 ki 14.

• Lwoko cing i nge gudo kom dano muto.

Wa i cencwari me 19, ludaktari onongo pud gimede ameda ki tic i kom latwo i nge gudo kom lyel—labongo lwoko cinggi. Tim meno oweko jo mapol guto. Ento Cik pa Moses onongo waco ni ngat mo keken ma ogudo kom lyel bibedo ma kome

keni nyo nongo pe leng. Dok kimiyo cik ni myero kiti ki pii me lonyo kom ngat meno. Tim man onongo konyo me gwoko yotkom.—Wel 19:11, 19.

• Yiko cet.

Mwaka ki mwaka, lutino makato milion acel gito ki two cado, tutwalle pien dano gikonye ata. Cik pa Moses onongo waco ni ka ngat moni okonye myero oyik cete woko maber, ka mabor ki ka ma dano bedo iye.—Nwoyo Cik 23:13.

• Kare me lirre.

Cik pa Lubanga onongo waco ni myero kilir latin laco i nge nino aboro ma kinywale iye. (Lulevi 12:3) Remo pa latin ma pud kinywalo nyen cako poto maber ka en dong

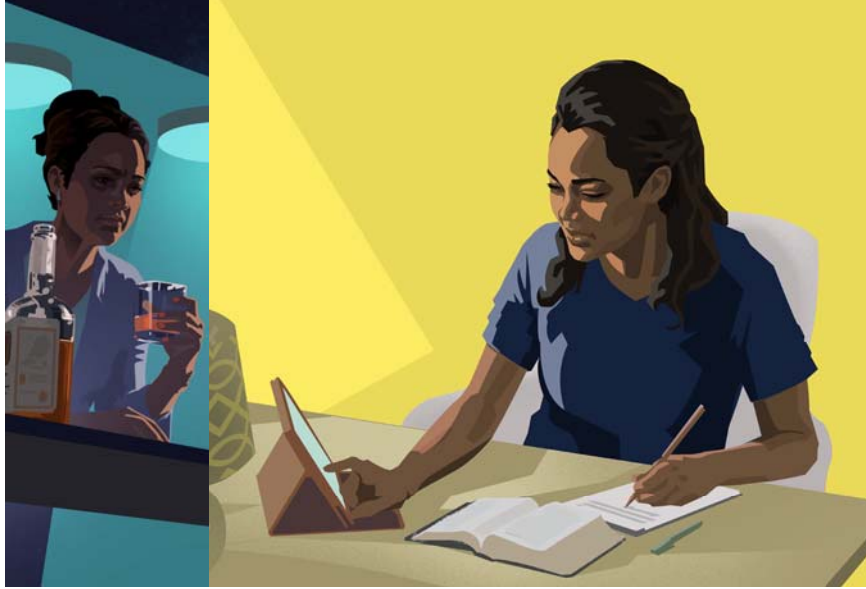
oo cabit acel. I kare me Baibul, ma pud peya onongo kitye ki yo me cango two maber calo i kare-ni, liro latin i nge cabit acel onongo nyuto ryeko.

• Kit ma wawinyo kwede i cwinywa gudo yotkomwa.

Lucayan ki lukwed lok madok i kom yotkom giwaco ni nyig mabeco calo yomcwiny, gen, cwiny me pwoc, ki cwiny me timo kica twero kelo adwogi maber i yotkomwa. Baibul waco ni: “Yomcwiny kelo yotkom, cwercwiny miyo dano mok [doko goru] woko.”—Carolok 17:22.

1

Pwonyi ki Kit me Gwokke ki i Peko



Baibul waco ni tirane kicoyo pi teko pa cwiny maleng dok “konyo me pwony, me juko dano, me tiro kit pa dano.” (2 Temceo 3:16) Tika meno tye ada? Nen kong kit ma ryeko me Baibul okonyo kwede ki dano me gwokke ki jami mogo maraco ma peya odonyo i kwogi matek.

MATO KONGO I YO MARAC

Delphine, ma waloko i kome i pwony mukato-ni, owinyo ni meno peko ma onongo en tye ka wok ki iye onongo tere i mato kongo matek adada. Baibul pe gengo mato kongo i yo mupore, ento waco ni: “Pe ibed i kin jo ma gin lumero ki kongo.” (**Carolok 23:20**) Kinongo ni mato kongo i yo marac balo yotkomwa, balo wat i kin jo me ot, dok neko dano mapol mwaka ki mwaka. Pol pa peko magi kitwero gwokke ki iye ka dano gulubo tira me Baibul.

Meno en aye gin ma Delphine otimo. En owaco ni: “Aniang ni meno mato kongo onongo pe tye ka cobo pekona. Atiyo ki tira me ryeko ma i **Jo Pilipi 4: 6, 7**, ma waco ni: ‘Pe wubed ki par i kom gin mo, ento . . . wumi Lubanga onge gin ma wumito.’ I dye-wor weng ka awinyo ni tam ki par gitye ka bwoya woko, alego bot Jehovah. Atito cwerwinya, par ki jami ducu ma nyweno wiya dok abako doga bote i lega wek en okonya me bedo ma cwinya opye mot. I odiko, aneno ni meno atute ki tekka ducu me weko par meno woko ducu. Lega bot Jehovah konya me keto tamma i kom jami *ma atye kwede* ma ka *jami ma ape kwede*. Amoko tamma pe me mato kongo doki. Pe onongo amito rwenyo kuc ma anongo pien pire onongo tekka adada.”

Tira me Baibul konyowa me gwokke ki i peko mogo



TIM ME CAROCARO

Tim me carocaró aye tye ka kelo turcwiny ki par ma loyo jami ducu. Ento cik ma igi lac me Baibul twero konyowa me gwokke ki i jami ma gikelo peko magi —me labolle, lok oree ki neno jami ma tugo miti me buto. Awobi mo matidi ma nyinge Samuel owaco ni: “Tim me oree onongo yot adada, i cawa mukene nongo cwinya pe i kom anyaka moni, ento atwero neno ni en tye ki miti i koma—dok meno weko loko lok oree bedo mit adada.” Samuel onongo ni meno pol kare gikok i kome pi tim me oree—kadi bed ni pe etimo akaka man oweko en ocako timone akaka. Ento man oweko cwinye obedo ka pide adada. En owaco ni, “man onongo rac adada pien weko itamo pi gin ma yomo cwinyi keni.”

Samuel okwano pwoy mo ma onongo kiyubo pi jo matino ma okati i jw.org. Dok otamo i kom **Caro- lok 20:11** ma waco ni: “Kadi wa latin nyuto kit ma etye kwede i gin ma en tiyo, ka gin ma en tiyo-ni ber nyo tye atir.” Meno okonye nining? Samuel oniang ni meno loko lok oree pe obedo gin maber. En bene owaco ni: “Aniang ni meno bulu ma maro loko lok oree dongo kit mogo maraco ma weko en bedo laco marac ka en onyomo. Acako tamo i kom kit ma dakona biwinyo kwede ka en ononga ka loko lok oree ki dako mukene. Meno oweka aniang ni tim man kelo adwogi marac i kwo pa dano. Kadi bed ni loko lok oree yot ento meno pe weko bedo tim mupore.”

Samuel oweko tim man woko. Juko oree bene okonye me gwokke ki i tim me carocaró.

Antonio onongo tye ka kemme ki peko madit loyo ma twero tere i tim me carocaró: En onongo dong odoko opii pa jami ma tugo miti me buto. Kadi bed ni en onyomme ki dako ma en maro adada, en pud obedo ka neno ki winyo jami ma tugo miti me buto kare ki kare. En owaco ni, tam i kom **1 Petero 5:8** okonye adada. Wang Baibul meno waco ni: “Wugwokke, wuki piny, pien lakworwu Catan tye ka wire macalo labwor ma kok kun yenyo dano me amwoda.” Antonio owaco ni: “Cal ma tugo miti me buto tye orumowa dyere, dok cal meno twero moko i wiwa adada. Tyeng meno okonya me niang ka ma atematema magi a ki iye. Onongo mitte ni wiya opo oyotoyot adada ni cal magi gua ki bot Catan. Kombeddi dong aniang ni Jehovah keken aye ma twero konya me ‘gwokke ki dok me bedo ma akiyo piny’ wek atute matek me jwayo cal magi ki i wiya, i cwinya ki dok gwoko nyoma.” Antonio onongo kony ma mitte dok oweko tim magi woko. Dok meno okonye me gwokke ki i peko mogo maraco makato.

Ki lok ada, Baibul miniwa tira ma gikonyowa me gwokke ki i peko mogo maraco adada. Ento peko ma dong gurwako lwitgi i kwowa dok ginen calo pe gitwero gik kono? Kong dong wanenu kit ma Lok pa Lubanga twero konyowa kwede me cobo peko magi.

2

Pwonyi ki Kit me Cobo Peko



Peko mukene i kwowa rii adada, dok mogo twero tero mwaki mapol, i kare mukene cakke ma nongo pe wangeyo. Baibul tika twero miniwa ryeko me cobo peko magi ma rii pi kare malac dok miniwa kwo matek-ki? Kong dong wanen labol mogo.

PAR MUKATO KARE WOKO

Rosie owacci, “Pol kare abedo ka paro jami ma peya otimme dok ki i tamma nongo peko magi gidongo adada.” Tyeng Baibul mene ma okonye? Acel i kingi aye **Matayo 6:34**: “Pe wubed ki par mapol pi nino ma diki, pien nino ma diki biparo pire kene.” Rosie owacci lok pa Yecu man okonye me weko paro pi jami ma twero timme diki. En omedde ni “Peko ma atye kwede onongo oromo koma woko ma pe mitte ni apar pi gin ma peya otimme nyo bene pe bitimme.”

Yasmine bene oniang ni par onongo tye ka bwoye woko. “I kare mukene onongo akok pi nino mapol, dok bene onongo pe atwero wa nino i dyewor. Abedo ka winyo calo tam maraco onongo dong tye ka bwoya woko.” Tyeng mene ma okonye? En oloko i kom **1 Petero 5:7**: “Wuket parwu ducu i kome [Lubanga], pien en tamo piwu.” Yasmine owacci: “Ka kare woto ki kato, amedde ki lega bot Jehovah dok en ogamo legana. Awinyo calo kitingo yec mappek adada ki i wiya. Tam maraco-ni pud gibino i wiya kare mukene, ento dong angeyo kit me tyekone.”

DIRO TIMO JAMI ANYIM

Latin anyaka mo ma nyinge Isabella owacci: “Atamo ni cwiny me diro timo jami anyim tye i remowa pien babana bene tye ki cwiny meno. Ma ka tiyo jami ma pigi tego abedo mere mot ka neno telebijon. Man kwo marac adada pien medo par dok miyo dano pe tiyo tic maber.” Cik ma iye lac ma okonye tye i **2 Temceo 2:15**, ma wacci: “Ket tek kit macalo itwero pi mine keni bot Lubanga macalo ngat ma gipwoyo, latic ma pe ki gin mo ma lewic myero omake iye.” Isabella owacci “Pe amito ni lewic omak Jehovah pi ticca ma pe atimo maber pien abedo ka diro timone con.” En dong kwone oyubbe maber adada.

Kelsey owacci: “I kare mukene nongo atye ki tic ma mito atima oyotoyot ento abedo ka dirone wang ma kare me timone dong pe. Man weko akok dok bene pe anino i dyewor kun abedo ka par. Kit kwo man onongo pe ber pira.” Kelsey onongo kony ki i **Carolok 13:16**: “Dano ma wiye tiyo cobo ticce ki ngec muromo, ngat ma laming bedo ka nyuto mingone ka maleng.” En otito kit ma tam i kom tyeng man okonye kwede: “Tye me ryeko me yubbe con wek icob ticci. I kare-ni atye ki buk ma acoyo iye jami ma mito atima ma agwoko i ka ticca, man konya weko pe abedo ka diro jami ma mito atima con.”

BEDO KENKEN

Kirsten owaco ni, “Cwara oa oweka woko kacel ki lutino angwen matino.” Cik mene ma iye lac me Baibul ma okonye? **Carolok 17:17** kwane kit man: “Ngat ma larem bedo ki mar i kare ducu, ki dano ginywalo me nywako peko ki omegine.” Kirsten onongo kony ki i kacokke bot jo ma woro Jehovah calo en. En onongo kony ango? “Lurema gukonya i yo mapol adada! I kare mukene gitenyo jami aca ma ki ature i nyim doggolana. Ki dek kulu ma lurema mapol gukonyo an ki lutinona me dak i kabedo mapatpat. Ngat acel i kingi okonya me nongo tic. Lurema gumiya kony i kare ducu ma amito kony.”

Delphine, ma waloko i kome i pwoy mukato-ni bene onongo winyo calo etye kene. Wiye po i kom kare ma en orweyo jamine ducu: “Abedo ka neno

kit ma jo mukene gitye ka kwo maber kun kitung bota kwona onongo tye matek dok bene iya pe yom. Onongo awinyo calo adong kena.” Tyeng acel ma okonye aye **Jabuli 68:6**: “Lubanga miyo paco bot jo mudong kengi ma piny oloyo, wek gubed iye.” En otito ni: “Onongo angeyo ni tyeng man pe tye ka lok i kom gang kikome i kare-ni. Ento aniang ni Lubanga miniwa gang me cwiny ka ma wanongo iye kwecwiny, ki lurem ma gimaro Jehovah. Onongo angeyo ni pe atwero bedo cok ki jo mukene ka pe atye ki wat macok ki Jehovah. **Jabuli 37:4** okonya timo meno, ‘Bed ki yomcwiny i [Rwot] Jehovah, ci en bimiya gin ducu ma cwinyi mito.’”

En odolo te lokke ni: “Aniang ni meno myero amok liking i kom Jehovah. En pe ki roc mo keken. Ci acoyo piny jami ma amaro timone kacel ki jo mukene wek amak lirem kacel ki jo ma gimaro Jehovah. Apwoy me neno kit mabeco ma jo mukene gitye kwede ki dok pe me keto cwinya i kom gorogi.”

Ki lok ada, jo ma giworo Jehovah pud gitye ki roc. Lucaden pa Jehovah bene gitute ki gorogi calo jo mukene. Ento pwoy me wanongo ki Baibul cuko cwiny dano me konyo jo mukene kit ma gitwero kwede. Bedo me ryeko me mako lirem ki jo ma kit meno. Kadi bed kit meno, tika cik ma igi lac me Baibul twero konyo dano me cobo peko ma dong nen calo cobogi pe twere i kare-ni, calo two ma pe cang ki arem me to?

Keto cik me Baibul i tic twero konyi me nongo lirem mabeco

3

Pwonyi ki Kit me **Ciro** Peko



Tye peko mogo ma pe watwero wene ki iye nyo cobone. Me labolle, ka irwenyo danoni me amara i to nyo ka itye ki two ma pe cang, nongo pe tye gin mo keken ma itwero timone mapat ki ciro arem ma itye ka wok ki iye. Tika Baibul twero konyi i kare meno?

TWO MA PE CANG

Rose owaco ni: “Atye ki two mo ma anongo ki bot lunyodona ma weko abedo i arem malit kare ducu. Kerona odok piny adada.” Par madit ma en onongo tye kwede aye ni i kine mukene nongo en pe twero kadi wa keto cwinye i kwano Baibul ki timo jami mukene me cwiny. Ento lok pa Yecu ma kicoyo i **Matayo 19:26** okonye adada: “Ki bot Lubanga jami ducu twere.” Rose oniang ni tye yo mukene ma etwero kwano kwede ki Baibul. Pien arem ma en winyo i kine mukene onongo weko pe twerre bote me kwano Baibul akwana, en ocako winyo Baibul kacel ki bukewa ma kimako i dwan keken.* En owaco ni: “Kono onongo yo meno obed pe, pe angeyo kit ma onongo atwero gwoko kwede watte ki Jehovah.”

Ka cwiny Rose tye ka cwer pien pe dong twero timo jami ma onongo yam en timo, ci nongo kwecwiny ki i lok ma kicoyo i **2 Jo Korint 8:12**: “Lubanga gamo mot ma dano tye kwede, tekke en obedo ki miti me miyone, ma pe paro gin ma pe etye kwede.” Lok meno poyo wi Rose ni cwiny Jehovah yom i kom jami ma en timo, pien ni etute matek me timo jami ducu ma kerone twero.

* Jami mapol ma kimako i dwan keken nonge i kabledowa me intanet me jw.org.

Baibul twero konyi
me nongo kwecwiny
kadi wa i kare ma
cwercwiny obwoyi
woko

KUMO

Delphine, lamego ma waloko i kome i pwoy mukato-ni wiye po ni: “I kare ma nyara ma mwakane 18 oto, abedo ki arem malit adada ma onongo pe angeyo ka atwero medde ki kwo. Kwona onongo dong pe bibedo kit macon.” En onongo kwecwiny madit ki i lok ma kicoyo i **Jabuli 94:19**, ka ma laco jabuli owaco bot Jehovah ni: ‘Ka aparopu jami mapol, in ikweyo cwinya ki kicani.’ Delphine owaco ni: “Alego bot Jehovah wek okonya me nongo gin atima ma twero kweyo cwinya ki i arem ma atye kwe-de.”

Delphine olungo wiye i konyo jo mukene. I nge kare mo, en ocalo pore kekene ki lawe cal pa latin—kadi wa ma gutur ma ginen calo pigi pe tek, pud kitwero tic kwede me wero cal maleng. I yo aceli, kadi bed ni en neno calo pire pe tek, ento en oniang ni pud etwero konyo jo mukene. En owaco ni: “Aca-ko niang cutcut ni ka atiyo ki Cik kacel ki tam me

Baibul me cuko cwiny lutino kwanna me Baibul, ci Jehovah bene nongo tye ka kweyo cwinya.” En ocoyo piny nying jo mogo ma kiloko i komgi i Baibul ma guwok ki i arem malit. “Labongo akalakala” en onongo ni “jo magi ducu onongo gimaro lega kare ducu.” En oniang ni “pe tye yo mo ma kitwero gamo ki legawa ka pe wakwano Baibul.”

Kwano Baibul opwonyo Delphine ki gin mukene—me keto cwinye i kom jami ma anyim ento pe i kom jami mukato anged. Gen ma kiloko pire i **Tic pa Lukwena 24:15** cuko cwinye adada: “Dano gibicer woko, jo ma kitgi atir wa jo ma kitgi pe atir.” En onyuto nining ni epe ki akalakala ni Jehovah bice-ro nyare? En owaco ni: “Agoyo cal pa nyara i anyim. Nino ma wabirwate iye dong kimoko woko, bedo calo Wora me polo dong omoko nino meno woko i kalendane. Agoyo calwa maber adada ma watye kacel i potowa mo mamwonya kit ma anene kwede i nino ma anywale iye.”

LUBANGA TWERO KONYOWA NINING?

Baibul miyo lagamme ka maleng. Waco ni: “Rwot [Jehovah] tye cok bot jo ducu ma kok bote, ma gikok bote ki ada. En miyo jami ducu ma mitte bot jo ma lwore, dok winyo kokogi, ci larogi bene.” (Jabuli 145:18, 19) Meno pe kweyo cwinywa adada? Ento Jehovah kono gamo lega pa jo ma giyenyo tira ki bote ki cwinygi ducu nining?

• EN MINIWA TEKO:

Peko ma watye ka wok ki iye turo cwinywa dok weko wabedo goro i yo me cwiny ki i yo me kom. (Caro- lok 24:10) Ento Jehovah ‘miyo teko bot jo magoro, dok bene medo teko bot ngat ma tekone odok woko piny.’ (Icaya 40:29) Lakwena Paulo ma bene okanyo atematema mapol owaco ni: “Tek madwong me twero

obedo gire pa Lubanga.” (2 Jo Korint 4:7) Cwiny maleng pa Lubanga aye omiyo teko bot Paulo. In bene itwero lego Lubanga wek omini cwiny mere maleng.—Luka 11:13.

• EN MINIWA RYEKO:

Ket kong ni imito niang ki keto tira me Baibul i tic. Lapwonnye Yakobo owaco ni: “Ka ce tye ngat mo i kinwu ma ryekone nok, myero en oleg Lubanga ma miyo bot jo ducu ki yomcwiny, kun pe twono ngat mo; ci bimiye.” (Yakobo 1:5) Itwero tic ma lubbe ki legani ka ikwano Baibul ki dok ka iketo gin ma ikwano i tic. (Yakobo 1:23-25) Ka itimo meno, ci ibineno ryeko ma nonge i Baibul.

• EN MINIWA KUC:

Kadi bed ni itye ki par mapol adada, Jehovah twero konyi wek ibed ma

cwinyi opye mot. Lokke waco ni: “Pe wubed ki par i kom gin mo, ento i lok ducu wumi Lubanga onge gin ma wumito i lega ki i bako dogwu kacel ki miyo pwoc bene. Man miyo kuc pa Lubanga ma kato nged pa jo ducu gwoko cwinywu ki tamwu maber i Kricito Yecu.” (Jo Pilipi 4:6, 7) Myero ileg Jehovah wek omini kuc. Ket kong ni pekoni pe tye ka gik kono? Pe myero itam ni Lubanga dong oweki woko. Kadi bed ni pekoni pud peya ogik, Lubanga twero cuko cwinyi dok mini kero me cirone. (1 Jo Korint 10:13). Lubanga bene ocikke botwa i Baibul ni kare bibino ma pekowa ducu bigik woko matwal!



Baibul ki Anyimmi

GO KONG ni itye ka wot i yo mo macol adada i otyeno. Kadi bed ni dong ceng opoto wa con, ipe ki lworu mo keken pien itye ki mac matar i cingi me menyo yo. Ka icaro ka tyeni, ineno jami ducu ma tye ka tyeni. Dok ka icaro anyim, ineno jami ducu ma tye anyim ka mabor.

I yo acel-li, Baibul tye calo mac meno. Kit ma waneno kwede i pwony mukato-ni, lok pa Lubanga konyowa me lweny ki peko ma wakem-me kwede nino ducu. Ento Baibul timo makato meno. Miyo waniang jami ma bitimme i anyim, dok konyowa me neno ki lubo yo ma weko wabedo ki yomcwiny ki kwo maber nakanaka. (Jabuli 119:105) Meno timme nining?

Kong dong waneno yo aryo ma Baibul konyowa kwede me bedo ki gen pi anyim: **1 konyowa me bedo ki kwo matir**, ki dok **2 pwonyowa kit me bedo ki wat maber ki Lacwecwa.**

1 KWO MATIR

Baibul miniwa tam matir kit me lweny ki peko maber, kadi bed pe obedo buk ma kicoyo mere me konyo dano keken. Ma ka cuko cwinywa me keto tamwa i kom parwa keken, Baibul pwoynyowa pe me lungu wiwa i cobo mitiwa keken. Meno aye gin ma weko wabedo ki kwo maber.

Me labolle, tam kom i kom cik ma iye lac me Baibul ma waco ni: “Miyo mot kelo gum [yomcwiny] ma kato gamo agama.” (Tic pa Lukwena 20:35) Tika wii po i kom nino mo ma ikonyo ngat mo ma mito kony? Nyo ijalo cawani kun iciko iti me winyo lok pa ngat mo ma cwinye otur? Tika cwinyi pe obedo yom pien ikonyo ngat mukene?

Wabedo ki yomcwiny madit ka wamiyo kony labongo genone ni myero kiculwa pire. Lacoc

mo acel owaco ni: “Tek tutwal me jalle me timo gin moni labongo nongo gin mo maber i ngeye makato ma itimo—*tekki itimo labongo gen ni myero kicul wange lacen.*” Ka wakonyo jo muke-ne—tuwalle jo ma pe gitwero culo wange—*ci kibiculowa* pire. Nongo pe watye ka keto cwinywa i cobo mitiwa keken. Ki lok ada, nongo watye ka tic kacel ki Lacwec kikome, ma neno cwiny me kica ma wanyuto bot jo mukene calo obedo banya ma myero eculwa pire. (Carolok 19:17) En tye ki pwoc madit adada pi jami ma watimo pi jo ma gimito kony, dok en ocikke me culo wange ki miniwa kwo ma pe tum i lobo paradac—man obedo gen mamwonya adada pi anyim!—Jabuli 37:29; Luka14:12-14.*

Ma dong pire tek loyo, Baibul pwonyowa ni watwero bedo ki kwo maber ka waworo Lubanga me ada, Jehovah. Lok pa Lubanga cuko cwinywa me mine pak, deyo, ki woro ma en opore me nongo. (Latitlok 12:13; Niyabo 4:11) Ka watimo meno, ci nongo watimo gin mo maber makato ducu: Bikelo yomcwiny bot Lacwecwa. En cuko cwinywa ni: ‘Bed ryek wek iyom cwinya.’ (Carolok 27:11) Tam kong—ka wamoko tam me ryeko ma cung i kom cik ma igi lac me Baibul, wayomo cwiny Wonwa me polo. Pingo? Pien en paro piwa dok mito ni wanong adwogi maber ma bino pi lubo tirane. (Icaya 48:17, 18) Ki lok ada, kit kwo mene maber loyo woro Lalo polo ki lobo ki dok kwo i yo ma yomo cwinye?

2 DONGO LIREM KI LACWECWA

Baibul cuko cwinywa me bedo ki wat macok ki Lacwecwa. Ginacoya wacciwa ni: “Wunyik cok bot Lubanga, ci en bene binyiko cok botwu.” (Yakobo 4:8) I cawa mukene watwero bedo ki akalakala kace twere me bedo larem Won Twer

* Pi ngec mukene madok i kom cikke pa Lubanga pi kwo ma pe tum i paradac, nen dul me 3 i buk me *Baibul Twero Pwonyowa Gin ango?* ma lucaden pa Jehovah aye gucoyo.

Ducu. Ento Baibul cuko cwinywa ni ka ‘waye-nyo Lubanga,’ ci ‘wabinonge’ “pien en pe tye cen ka mabor ki bot ngat acel acel i kinwa.” (Tic pa Lukwena 17:27) Tam ma Baibul miyo me mako lirem macok ki Lubanga obedo tam me ryeko adada pi kare me anyim. I yo mene?

Tam kong: Kadi dong watute nining ki kero-wa kenwa, pe tye ngat mo ma twero bwot ki i kom lakworwa—to. (1 Jo Korint 15:26) Ento, Lubanga bedo nakanaka. En pe bito, dok bene mito ni lureme bene gukwo pi naka. Baibul nyuto ka maleng ni Jehovah mito ni jo ma yeyne: ‘myero gubed ki kwo maber nakanaka!’—Jabuli 22:26.

Itwero dongo lirem ma kit meno ki Lubanga won twer ducu nining? Medde ki pwonyo lok i kome kun ikwano Lokke. (Jon 17:3; 2 Temceo 3:16) Leg pi konye wek iniang Ginacoya. Baibul cuko cwinywa ni ka ‘walego Lubanga’ ki cwinywa ducu pi ryeko, ci en biminiwa.* (Yakobo 1:5) Me agikkine, tute me keto gin ma ipwonyo i tic, wek lok pa Lubanga oti macalo ‘tara ma menyo ka tyeni’ ki dok mac ma ‘menyo yo ma iwoto iye.’—kumbeddi-ni ki pi naka.—Jabuli 119:105.

* Lucaden pa Jehovah gikwano Baibul ki dano me nono ma twero konyi me dongo ngec-ci i kom Ginacoya. Ka imito nongo ngec mapoli i kom lok man, tim ber inen vidio ma wiye tye ni *Ngo ma Timme ka Kitye ka Kwano Baibul?* Me nongo vidio man, cit i kabledowa me intanet me jw.org, ci ico nying vidio man i ka yenyo jami ma tye.

Lubanga bedo nakanaka,
dok mito ni lureme bene
gukwo pi naka

IN ITAMO NINGO?

Tika Baibul twero konyi me bedo larem Lubanga?

JO MOGO GIWACO NI . . .

pe gitwero bedo larem Lubanga pien giwinyo calo pe gipore nyo ni gin lubalo. Mukene giwaco ni Lubanga pe paro piwa. In kono itamo ningo?

GIN MA BAIBUL WACO

Lubanga “tye ki gen i kom [nyo bedo larem] jo ma kitgi atir.” (Carolok 3:32) Ka wabedo luwiny bot Lubanga, ci wadoko lureme.

NGO MUKENE MA WAPWONYO KI I BAIBUL?

- Lubanga mito bedo Laremwa.—Yakobo 4:8.
- Macalo laremwa Lubanga tye atera me konyowa ki dok timiwa kica.—Jabuli 86:5.
- Lurem Lubanga gimaro gin ma Lubanga maro dok gidag gin ma en dag.—Jo Roma 12:9.



WUTIM BER WUCWALA BUK ME

Baibul Twero Pwonyowa Gin Ango?

Pi ngec mukene madok i kom kit ma itwero kwo i yo ma yomo cwiny Lubanga, nen dul me 12 i buk man, ma Lucaden pa Jehovah aye gucoyo. Tye bene i kabedowa me intanet i www.jw.org/ach

LEB _____

NYING _____

ADREC _____

Pi adrecwa, nen pot karatac 2



Kob magajin man kacel ki macone me nono ki i intanet



Baibul bene tye i leb makato 150 kulu

Cit i www.jw.org/ach, nyo meny bok man



wp.18.1-AC
171025