



Our Christian Life and Ministry

MEETING WORKBOOK

Sample Conversations

▲ Priests carry out their duties at the tabernacle

INITIAL CALL

Question: Where can we find advice on how to live a happy life?

Scripture: Ps 1:1, 2

Link: What effect can the love of money and possessions have on our happiness?

FIND THIS SCRIPTURE IN THE TEACHING TOOLBOX:

• *fg* lesson 12 ¶6



RETURN VISIT

Question: What effect can the love of money and possessions have on our happiness?

Scripture: 1Ti 6:9, 10

Link: What are the benefits of maintaining a positive attitude?

FIND THIS SCRIPTURE IN THE TEACHING TOOLBOX:

• *fg* lesson 11 ¶7



- Song 32 and Prayer
- Opening Comments (1 min.)

TREASURES FROM GOD'S WORD

- **“Love for Jehovah Stronger Than Love for Family”:** (10 min.)
Le 10:1, 2—Jehovah struck Nadab and Abihu dead for offering unauthorized fire (*it-1* 1174)
Le 10:4, 5—Their bodies were removed from the camp
Le 10:6, 7—Jehovah commanded Aaron and his other sons not to display grief (*w11* 7/15 31 ¶16)
- **Digging for Spiritual Gems:** (10 min.)
Le 10:8-11—What can we learn from these verses? (*w14* 11/15 17 ¶18)

Le 11:8—Must Christians refuse to eat animals prohibited under the Mosaic Law? (*it-1* 111 ¶5)

What spiritual gems from this week's Bible reading would you like to share regarding Jehovah, the field ministry, or something else?

- **Bible Reading:** (4 min. or less) Le 10:1-15 (10)

APPLY YOURSELF TO THE FIELD MINISTRY

- **Initial Call Video:** (4 min.) Discussion. Play the video. Then ask the audience: How did Tony overcome a common objection? How might you reason with someone on Psalm 1:1, 2?
- **Initial Call:** (4 min. or less) Begin with the sample conversation. Give the householder a meeting invitation, and introduce (but do not play) the video *What Happens at a Kingdom Hall?* (20)
- **Talk:** (5 min. or less) *w11* 2/15 12—Theme: How Was Moses' Anger With Eleazar and Ithamar Appeased? (12)

LIVING AS CHRISTIANS

- Song 51
- **“We Show Love by Supporting Jehovah's Discipline”:** (15 min.) Discussion. Play the video *Maintain Loyalty With a Unified Heart* (video category THE BIBLE).
- **Congregation Bible Study:** (30 min. or less) *rr* chap. 1 ¶15-19, box 1B
- Concluding Comments (3 min. or less)
- Song 15 and Prayer

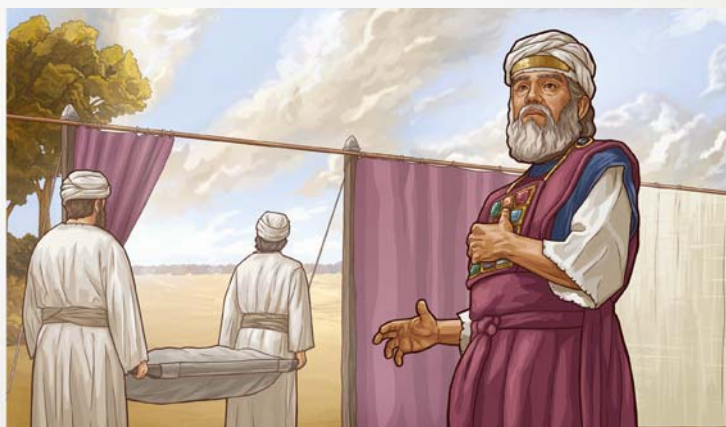
LEVITICUS 10-11 | Love for Jehovah Stronger Than Love for Family

10:1, 2, 4-7

Our loyalty to Jehovah can be greatly tested when a loved one is disfellowshipped. Jehovah's instruction to Aaron provides a clear message to those who must cut off association with a disfellowshipped relative. Our love for Jehovah must be stronger than our love for unfaithful family members.



What blessings can come to those who work along with Jehovah's instructions regarding disfellowshipped ones?—1Co 5:11; 2Jo 10, 11



We Show Love by Supporting Jehovah's Discipline

Disfellowshipping protects the congregation and disciplines unrepentant wrongdoers. (1Co 5:6, 11) When we support such discipline from Jehovah, we show love. How can this be true when disfellowshipping causes emotional pain to all involved, including close relatives and the judicial committee?

Above all, we show love for Jehovah's reputation and his standard of holiness. (1Pe 1:14-16) We also show love for the person who was disfellowshipped. Strong discipline, though painful,

can yield "the peaceable fruit of righteousness." (Heb 12:5, 6, 11) We interfere with Jehovah's discipline if we associate with a disfellowshipped person or with one who has disassociated himself. Remember, Jehovah disciplines his people "to the proper degree." (Jer 30:11) As we support Jehovah's discipline and maintain our spiritual routine, we keep hoping for the person to return to our merciful Father.—Isa 1:16-18; 55:7.

WATCH THE VIDEO DRAMATIZATION *MAINTAIN LOYALTY WITH A UNIFIED HEART*, AND THEN ANSWER THE FOLLOWING QUESTIONS:



- What pain do Christian parents feel when a child leaves Jehovah?



- How can the congregation support faithful family members?



- What Bible account illustrates the importance of loyalty to Jehovah being stronger than loyalty to family?



- How do we put loyalty to Jehovah above loyalty to family?

- Song 140 and Prayer
- Opening Comments (1 min.)

TREASURES FROM GOD'S WORD

- **"Learn From the Laws on Leprosy":** (10 min.)
Le 13:4, 5—People with leprosy were quarantined (*wp18.1 7*)
Le 13:45, 46—Lepers had to avoid infecting others (*wp16.4 9 ¶1*)
Le 13:52, 57—Contaminated articles had to be destroyed (*it-2 238 ¶3*)
- **Digging for Spiritual Gems:** (10 min.)
Le 12:2, 5—Why did childbirth make a woman "unclean"? (*w04 5/15 23 ¶2*)

Le 12:3—Why might Jehovah have required circumcision on the eighth day? (*wp18.1 7*)

What spiritual gems from this week's Bible reading would you like to share regarding Jehovah, the field ministry, or something else?

- **Bible Reading:** (4 min. or less) Le 13:9-28 (5)

APPLY YOURSELF TO THE FIELD MINISTRY

- **Return Visit Video:** (4 min.) Discussion. Play the video. Then ask the audience: How did Tony make effective use of questions? How did he make the scripture application clear?
- **Return Visit:** (4 min. or less) Begin with the sample conversation. Overcome a common objection. (19)
- **Return Visit:** (5 min. or less) Begin with the sample conversation. Introduce the *Good News* brochure, and start a Bible study in lesson 11. (9)

LIVING AS CHRISTIANS

- Song 125
- **Local Needs:** (15 min.)
- **Congregation Bible Study:** (30 min. or less)
rr chap. 2 ¶1-9, intro video
- Concluding Comments (3 min. or less)
- Song 28 and Prayer

LEVITICUS 12-13 | Learn From the Laws on Leprosy

13:4, 5, 45, 46, 52, 57

What can the principles behind the laws on leprosy teach us about protecting our spiritual health?

- Jehovah taught the priests how to identify leprosy quickly. Christian shepherds today are quick to give attention to any who require spiritual assistance.—Jas 5:14, 15
- Israelites had to destroy any items infected with leprosy to prevent further contamination. Christians too must be willing to give up even something precious to them rather than allowing it to lead them into sin. (Mt 18:8, 9) This may include such things as habits, associations, or entertainment



How can a Christian show a firm desire to accept Jehovah's help?

- Song 122 and Prayer
- Opening Comments (1 min.)

TREASURES FROM GOD'S WORD

- **"Pure Worship Requires Cleanness":** (10 min.)
Le 15:13-15—Men had to purify themselves of uncleanness (*it*-1 263)
Le 15:28-30—Women had to purify themselves of uncleanness (*it*-2 372 ¶2)
Le 15:31—Jehovah expects pure worship from his people (*it*-1 1133)
- **Digging for Spiritual Gems:** (10 min.)
Le 14:14, 17, 25, 28—What can we learn from the purification procedure for a cleansed leper? (*it*-1 665 ¶5)

Le 14:43-45—What did the law regarding malignant leprosy in a house teach the Israelites about Jehovah? (*g* 1/06 14, box)

What spiritual gems from this week's Bible reading would you like to share regarding Jehovah, the field ministry, or something else?

- **Bible Reading:** (4 min. or less) Le 14:1-18 (5)

APPLY YOURSELF TO THE FIELD MINISTRY

- **Initial Call:** (3 min. or less) Begin with the sample conversation. Offer a magazine to address a topic raised by the householder. (16)
- **Return Visit:** (4 min. or less) Begin with the sample conversation. Introduce and discuss (but do not play) the video *Jehovah's Witnesses—Who Are We?* (11)
- **Bible Study:** (5 min. or less) *fg* lesson 11 ¶6-7 (19)


LIVING AS CHRISTIANS

- Song 76
- **"Keep Using the Magazines":** (10 min.) Discussion.
- **Organizational Accomplishments:** (5 min.) Play the *Organizational Accomplishments* video for December.
- **Congregation Bible Study:** (30 min. or less) *rr* chap. 2 ¶10-18
- Concluding Comments (3 min. or less)
- Song 118 and Prayer

LEVITICUS 14-15 | Pure Worship Requires Cleanness

15:13-15, 28-31

To remain in God's love, we need to be clean on the inside as well as on the outside. This means that we adhere faithfully to Jehovah's standards of physical, moral, and spiritual cleanness, regardless of how the world around us acts. We refrain from touching anything that our heavenly Father views as unclean.

 **How do I benefit from rejecting this world's ungodliness?**



- Song 41 and Prayer
- Opening Comments (1 min.)

TREASURES FROM GOD'S WORD

- **“Atonement Day and You”:** (10 min.)
Le 16:12—The high priest appeared in Jehovah’s presence symbolically (*w19.11* 21 ¶4)
Le 16:13—The high priest offered incense to Jehovah (*w19.11* 21 ¶5)
Le 16:14, 15—The high priest then made atonement for the sins of the priests and the people (*w19.11* 21 ¶6)
- **Digging for Spiritual Gems:** (10 min.)
Le 16:10—In what ways did the goat for Azazel picture the sacrifice of Jesus? (*it-1* 226 ¶3)

Le 17:10, 11—Why do we refuse to accept a blood transfusion? (*w14* 11/15 10 ¶10)

What spiritual gems from this week’s Bible reading would you like to share regarding Jehovah, the field ministry, or something else?

- **Bible Reading:** (4 min. or less) Le 16:1-17 (5)

APPLY YOURSELF TO THE FIELD MINISTRY

- **Initial Call:** (3 min. or less) Begin with the sample conversation. Overcome a common objection. (3)
- **Return Visit:** (4 min. or less) Begin with the sample conversation. Offer a study publication. (4)
- **Bible Study:** (5 min. or less) *fg* lesson 1 ¶1-2 (14)

LIVING AS CHRISTIANS


- Song 70
- **“Are You Willing to Apply for the School for Kingdom Evangelizers?”:** (15 min.) Discussion. Play the video *Field Missionaries—Workers in the Harvest*.
- **Congregation Bible Study:** (30 min. or less) *rr* chap. 2 ¶19-27
- Concluding Comments (3 min. or less)
- Song 50 and Prayer

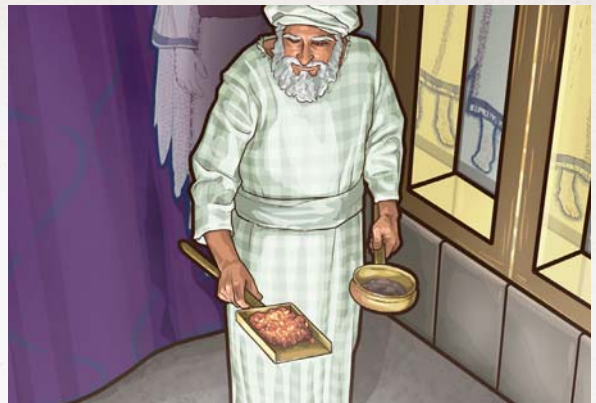
LEVITICUS 16-17 | Atonement Day and You

16:12-15

What can we learn from the use of incense on Atonement Day?

- The acceptable prayers of Jehovah’s faithful servants are like incense. (Ps 141:2) Just as the high priest brought the incense to Jehovah with great respect, we approach Jehovah in prayer with awe and respect
- The high priest had to burn incense before he could offer up the sacrifices. Similarly, before Jesus could offer up his life as a sacrifice, he had to prepare the way for Jehovah to accept his sacrifice by living a life of integrity and loyalty

 How can I make sure that my sacrifices to Jehovah will be acceptable to him?



Are You Willing to Apply for the School for Kingdom Evangelizers?



Are you between the ages of 23 and 65 and in full-time service? Do you have good health, and are you able to serve wherever there is a greater need? If you answered yes to these questions, have you considered applying for the School for Kingdom Evangelizers? Since the first class, thousands of married couples, single brothers, and single sisters have applied. However, we need more single brothers to apply. Ask Jehovah to increase your desire to please him and to imitate his Son. (Ps 40:8; Mt 20:28; Heb 10:7) Then consider ways to reduce secular or personal obligations in order to qualify.

What avenues of service have opened to graduates after they received this theocratic training? Some graduates have been assigned to serve in areas where other languages are spoken or to share in special metropolitan public witnessing. Other graduates later serve as substitute circuit overseers, as circuit overseers, or as field missionaries. As you ponder prospects in Jehovah's service, may you echo the words of the prophet Isaiah: "Here I am! Send me!"—Isa 6:8.

WATCH THE VIDEO *FIELD MISSIONARIES—WORKERS IN THE HARVEST*, AND THEN ANSWER THE FOLLOWING QUESTIONS:

- How are field missionaries selected?



- What good work are field missionaries doing?



- What are some of the blessings of missionary service?

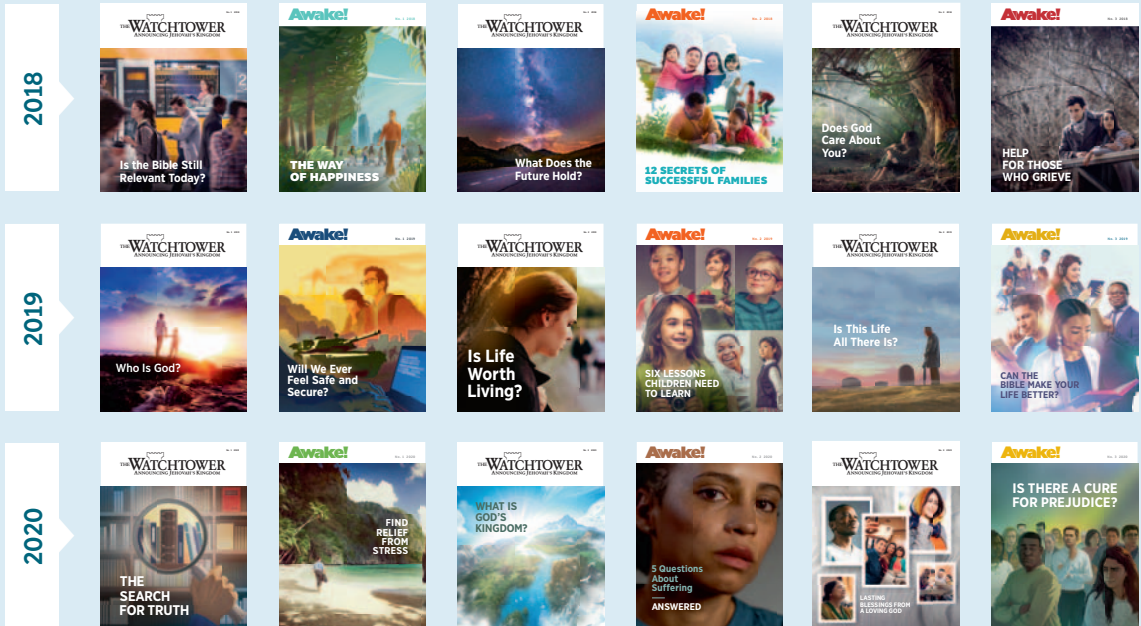


Would you like to learn more about the School for Kingdom Evangelizers? Go to "Videos" in the Library section of jw.org, and look under OUR ACTIVITIES > THEOCRATIC SCHOOLS AND TRAINING. Watch the videos *Theocratic Schools in the Heart of Africa*, *Spiritually Rich by Jehovah's Teaching*, and *SKE First Graduation*.

Keep Using the Magazines

Since 2018, our public magazines have featured just one subject per issue. All of these magazines are part of our Teaching Toolbox. So we may use them in the ministry. We might also carry a few issues with us while traveling or shopping. The magazines are not designed to study the Bible with people, but they can awaken someone's spiritual interest.

After starting a conversation, share a scripture and mention a magazine subject that may appeal to the person. For instance, if he is raising a family or coping with grief or stress, you might say: "I recently read a good article on that subject. May I show you?" If you detect interest, you can either give him a printed copy of the magazine or send him an electronic copy, even on the initial call. Although placing literature is not our principal goal, the magazines may help us find those who are willing to act on what they learn.—Ac 13:48.



What subjects interest people in your territory?



rw520-12-E
200804